

# GOLF PENNSYLVANIA GOLF NORTHEAST

Vol. XXVIII No. 1

Spring 2016

## Swing Into Spring Golf

Destination:

Spring Golf Comes to the Jersey Shore

USGA Events in Pennsylvania

U.S. Open at Oakmont

Blue Ridge Trail Golf Club Turns Heads

Best New Products at PGA Merchandise Show

Tony's Top Ten

Drive, Chip and Putt Qualifying  
at Mill Race

Results; Philly PGA, PPGS and AGA

*Greate Bay  
Country Club  
Somers Point, NJ Hole #12*





# May 30-June 5, 2016

## Stockton Seaview Hotel & Golf Club

[www.shopritelpgaclassic.com](http://www.shopritelpgaclassic.com)

# A Shore Tradition





# Spring Golf at the South Jersey Shore



Stockton Seaview Hole #2

By *MIKE KERN*

It's that time on the calendar again. It happens every spring. But this year it's worse. I haven't picked up a golf club since last October. And I just got done covering Villanova's basketball team for a month en route to a national championship. So I'm more in need of a round or two than ever. At this point, even an hour at a practice range would be. And I never hit balls off a mat. But you know what they say about desperate times. I need my fix. I just celebrated my 58th birthday, and sometimes it's starting to feel more like 68. I know I always feel better when I'm stalking the elusive birdie, even if it's mostly from the forward tees these days. Hey, a duffer has to do whatever he must to stay interested. And motivated. I'm not breaking the course record any more. Not that I ever really threatened any in the first place.

Usually I would have snuck in at least a couple of rounds by now, either in my travels or at home. But as I mentioned, it's been busy. So I have to make up for lost opportunities. Which brings me to one of my favorite places, the South Jersey shore. Where there's plenty of sand, water and potential three-putts. Once upon a time, I didn't take my clubs with me when I visited. That's when my kids were young and I was more into the family thing. That all changed about two decades ago. One of the best moves I ever made. Now I think of it as much as a golf destination as I do for all the other stuff it offers. It's all good. But man cannot live by boardwalks and cold beverages at sunsets alone.

It's always nice to go back, whether it's for a day, a weekend or an extended vacation. I never run out of options, in terms of both quantity and quality. And I'm happy to share my thoughts and experiences, for those that maybe get a par 4 with a driver over water that's the ultimate in risk-reward for how much you choose to bite off. The par-5 ninth is kind of like the 18th at Pebble Beach. You just keep going around the wet stuff all the way to the green. Again, you have to know how daring you want to get. There's a lot of sand, and enough water. And also birdie ops to be had. But you can also make double bogeys without really trying too hard. The par 3s for the most part are pretty stout. And the closing hole — a longish par-4 with trees on both side that bends slightly to the right to a large, open green — is really more of a 4 1/2. All in all, it will at the very least make you hit some shots. Or else face the consequences. But isn't that the way it should be?

The **Stockton Seaview Hotel** in Galloway, on Route 9 just across the bay from the casinos and outlet malls, has hosted the LPGA's Shop Rite Classic since 1998 on



Blue Heron Pines Hole #15

its **Bay course**, which puts a premium on iron play to smallish greens. The wind there is always a factor, which makes it fun. It can also be daunting. There's a good mix of short and long holes, again depending upon from which direction and how hard it's blowing. The women seem to like it each spring, and I can understand why. It tends to be user friendly. And how many times do you get to play somewhere that the pros tackle.

Across the street is the sister **Pines course**, which is a lot tighter and maybe tougher. It certainly contains a lot of doglegs. They have eliminated many of the trees in recent years, but it's still in places like shooting through a corridor. And not always a wide one. It's quite different than what exists on the Bay, and that's good. You wouldn't want them to be too alike. I've played the bay more, but they're both more than worthy. If the conditions are benign, you'll probably be able to score better on the Bay. But the purist might prefer the Pines. It's more traditional of what you find in the northeast, or at least what I played growing up. If I can stay away from trees and have room to miss, well that's more my comfort level. And the Bay, a Donald Ross design that opened in 1914, did host the 1942 PGA Championship that Sam Snead won (at match play, of course) to claim the first of his seven major championships. Nothing wrong with a little history.

**Blue Heron Pines**, in Galloway Township not far from the White Horse Pike or exit 14 of the Atlantic City Expressway, is the course that started the whole upscale public golf course revolution in the greater Atlantic City region back in 1993. It's received many honors through the years, but it's only gotten better since Ron Jaworski took over the operation a few years ago, making it the flagship of his growing empire. The first thing he did was get rid of all the overgrowth that had for whatever reasons been allowed to envelope too much of the place. The difference was immediate, and monumental. It was always very playable, but now it's back to being visually stimulating as well. If you know anything about Jaws, he does everything first class. So no detail is too minor. And it shows, from the course itself to the pro shop to the hospitality. They always seem to have something special going on there to fit most anyone's needs. Even though there's some holes that can destroy you, I usually walk off feeling as if I didn't get beat up too much. Nice. So it's the kind of place you can play over and over and never get tired of. A lot to be said for that. And if the former Eagles quarterback turned ESPN NFL analyst happens to be hanging around, you can always try to get him to give you some insight on how he thinks the Birds are

*Spring Golf at the Jersey Shore continued on page 13*





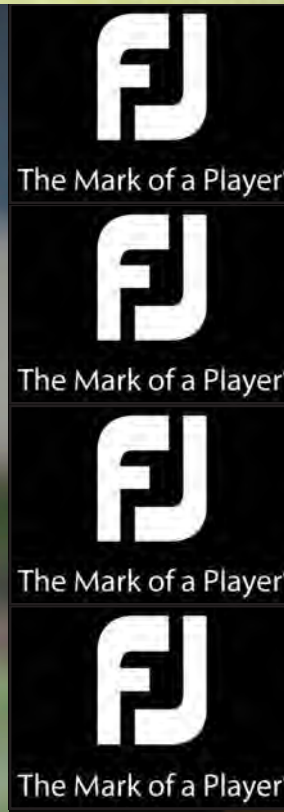
Henrik Stenson



Webb Simpson



Adam Scott



Call FJ Customer Service: 800-225-8500

www.footjoy.com



# Blue Ridge Trail GC Turns Heads With Golf Advisor National Rankings



Blue Ridge Golf Course – Fall 2015 Hole #8



Blue Ridge Golf Course Ridge Hole #7

By Tony Leodora

Mountain Top PA—The story of Blue Ridge Trail Golf Course has been one of constant improvement – ever since the renowned architectural firm of Ault and Clark designed the first nine holes and it opened in 1993.

Another nine holes was added in 2000. The final nine holes completed the 27-hole layout in 2007. But those additions were far from the end of the effort to improve the daily fee layout that has been a popular stop near the junction of I-80 and I-81, near the western edge of the Pocono Mountains.

“Our goal is to constantly improve this course,” reports Blue Ridge Trail general manager Tony Barletta. “We are committed to providing the best conditions possible, at all times.”

Barletta’s commitment comes naturally. His background was in the golf course superintendent field. Now he teams with Blue Ridge Trail superintendent Duane Schell to provide a one-two punch that keeps golfers coming back ... and smiling.

Proof of that fact comes in a pair of lofty ratings from the Golf Advisor, an organization that polls golfers in an attempt to rank golf courses and provide important feedback to traveling golfers.



Blue Ridge Golf Course – Blue Hole #2

In its recent statewide rankings, Blue Ridge Trail GC was rated the No. 1 daily fee golf course in Pennsylvania.

In its recent national rankings, Blue Ridge Trail GC was rated No. 23 nationally in the “value” category.

The accolades have the management team at Blue Ridge Trail GC smiling. And deservedly so.

“We were elated to receive that kind of national notoriety,” said Barletta. “Despite the fact that we are easily accessed from two major interstates, our course is not blessed with high visibility. We are a bit off the beaten path.

“As a result, not everybody knows about us. Sometimes it takes a while for the raters to find us. Now, with this two great national rankings, maybe that will change.”

Thanks to the early spring, Blue Ridge Trail enjoyed one of its earliest openings this year. On Wednesday, March 9 the course set an early-season record, hosting 245 golfers.

“The biggest surprise for most of them was the conditions they found when they came out,” reported Barletta. “It was like we were in mid-season form.”



# Make Greate Bay YOUR Club!

- Private Country Club • 3 hour & 58 minute rounds •
- Historic Course designed by Willie Park, Jr. & Tom Fazio •
- Delicious dining in the casual Pub or elegant Park Room •
- Welcoming atmosphere & camaraderie • Active calendar of Club Events •

Join today for the  
**2016 Golf Season & receive  
 2 Months for FREE.**

Additional Bonus Gifts  
 will be awarded based  
 on Membership Level  
 (Value up to \$400)

Offer Expires June 15th, 2016.



**Contact:**  
**Ron Ralston, General Manager**  
**at 609.927.5071 ext. 112**





# USGA Events In Pennsylvania



Oakmont Country Club near Pittsburgh 18th Green



Oakmont Country Club Famed Church Pews on Hole #3

By *MIKE KERN*

Pennsylvania has hosted 82 USGA championships, starting with the 1904 Women's Amateur at Merion in suburban Philadelphia. That's more than any other state. And this the commonwealth will be adding to that total by serving as the venue for four more.

The most notable, of course, is the USGA's flagship event, the U.S. Open, which many feel is the toughest major to win. For all the traditionally sadistic set-up reasons we've come to either admire or hate. The week can be downright tortuous, even for the winner. And this year it's going back to one of the toughest challenges, Oakmont Country Club near Pittsburgh. This will be the course's ninth Open, a record. The last time it was there, in 2007, Angel Cabrera took home the trophy with a score of 5-over par 285, one better than three-time champion Tiger Woods and 2003 winner Jim Furyk, the local rooting favorite.

This time, Jordan Spieth is the defending champ. The 22-year-old could have won the last five majors. But he finished one out of a playoff at last summer's British Open, was second to Jason Day a month later at the PGA Championship and then just blew a five-shot lead on the back nine at Augusta National, where he was also the defending champ. Two decades from now, how many will remember that England's Danny Willett left with a green jacket? But it'll be hard to forget watching Spieth, who has family ties to the Lehigh Valley, dunking not one but two balls into Rae's Creek on Sunday afternoon en route to a quadruple-bogey 7. It happens. I guess we'll find out soon enough if it has any lingering impact on his psyche/game.

Oakmont is the place where Ben Hogan beat Sam Snead by six in 1953. And where Jack Nicklaus got his first major by taking down Latrobe's own Arnold Palmer in a playoff (71 to 74) nine years later. And where Johnny Miller closed with a 63 to win by one in 1973. And where Larry Nelson edged defending champ Tom Watson by a stroke in 1982. Or where Ernie Els got the first of his four majors by outlasting Colin Montgomerie and Loren Roberts over 18 extra holes. When of course the world wasn't monitoring what was happening out in Los Angeles with O.J. Simpson.

Oakmont has also hosted three PGAs. In 1922, Gene Sarazen won the second of his seven majors by besting Emmett French in the final match, 4&3. He'd won the U.S. Open earlier that year. In 1951, Sam Snead won the fifth of his seven majors with a 7&6 victory over Walter Burkemo. It was his third PGA title, and second in three years. Burkemo would win it two years later. In 1978, John Mahaffey beat Tom Watson and Jerry Pate with a birdie on the second hold of sudden death.

So if nothing else, Oakmont for the most part has had a distinguished list of champions. Not too shabby of a reputation, for a course that is the only one designed by Henry Fownes. Maybe that's why it's been selected 16 times by the USGA. Only Merion, with 18, has been used more often.

Oakmont has been the site of two Women's Opens. In 2010, Paula Creamer got her only major win by finishing four ahead of Suzann Pettersen and Na Yeon Choi. And in 1992, Patty Sheehan beat Juli Inkster by two in a playoff, after making birdies on the closing two holes of regulation to tie.

So when it comes to history, Oakmont doesn't have to take a backseat to any site this side of St. Andrews. The latest chapter figures to merely add another notch to that legacy.

In case you forgot, Oakmont used to be a tree-lined test. That was before the powers that be removed just about all the trees in the early 2000s. Now the look is totally different. You can stand on the first tee and see most of the course. Most seemed to approve of the dramatic changes. But one thing remains the same: the speed of the greens. I remember a story that a friend of mine who lives out there told me. One time he took a pretty good golfing buddy out to play. And the buddy remarked how the greens were rolling pretty fast that day. To which my friend replied, "No, actually they're a little slow." That's Oakmont. There are few water hazards, but they're not needed. Because there are over 200 of the most menacing bunkers you'll ever encounter lurking at every turn. So if you can win there, you've earned it. There's a reason why it's ranked among the top courses anywhere. As always, it'll end on Father's Day, which this year is June 19.

*USGA Events In PA continued on page 17*



# Golf Pennsylvania

## Golf Northeast www.golfpa-golfne.com

**Don Allan --  
Publisher**

PO Box 573  
Lake Harmony, PA  
18624

For advertising rates  
Contact:

**570-881-6458**



**PlayLocalGolf.com**  
*Golf's New Social Networking Site*



You want to promote your own golf events?  
Find local events to play?  
Search events at specific Golf Courses?  
Or maybe get some tips from  
your local PGA Professionals.

Now you can do it all on  
[www.Playlocalgolf.com](http://www.Playlocalgolf.com)

**Best of all it's Free**  
Sign up today and stay connected to  
your local golf community!

Follow us on Facebook, Twitter and YouTube

[www.Playlocalgolf.com](http://www.Playlocalgolf.com)

**Check Out Our Website for**

- Courses
- PGA Professionals
- Events and Results
- Hole in Ones

# River's Edge Golf Club

#12 PLACES TO PLAY -  
GOLF MAGAZINE - 2012

RIVERS EDGE AWARDED  
4-1/2 STARS IN GOLF DIGEST'S "  
PLACES TO PLAY IN AMERICA"

**PLAY OUR  
ARNOLD PALMER  
Signature Course**  
BOOK YOUR TEE TIME  
toll free 877.RIVER18 (748.3718)  
local: (910) 755-3434

*DIRECTIONS: On HWY 17, head towards Shallotte,  
NC. Next turn onto US-17 BUS S/Main St, then onto  
Village Rd, and finally onto Copas Rd. The Rivers  
Edge entrance will be on the left.*



Arnold Palmer

• <http://www.river18.com> • email: [info@river18.com](mailto:info@river18.com)  
LOCATION: 2000 Arnold Palmer Drive, Shallotte, NC



**The Public's  
Country Club**

### Sand Springs Country Club

**SENIORS (55+) \$29<sup>99</sup> WITH LUNCH**  
Monday - Friday (Non Holidays)  
18 Holes, Cart & Lunch  
**(570) 788-5845** GPGN  
MUST PRESENT COUPON VALID 2015

**\$\$ LOOKING TO RAISE MONEY \$\$**

**Book Your Golf Tournament Now!**  
All Inclusive Packages - Best Rates In The Area  
18 Holes With Cart  
Unlimited Range Balls & All You Can Eat Buffet  
Packages Start At \$37 Per Person  
Call Johnny For Details At 570.788.5845 ext. 3  
[www.SandSpringsGolf.com](http://www.SandSpringsGolf.com)



# Best New Products in the World of Golf: PGA Merchandise Show Reviews



2. BioMech's ACE  
PUTTER



3. Kentwool  
Henry Vest Lt. Gray



1. Tour Edge  
Rally Wedge



5. Bridgestone Tour B330  
and B330S Golf Balls



4. Golf Pride's Find Your  
Perfect Grip-fit

by Leonard Finkel

A great many new products were introduced at the recent PGA merchandise show. There were way too many great products to write about all of them, so here are a few for you to read about.

The **Rally Wedge** is designed to give players the freedom to be creative around the greens. Tour Edge engineers took great care in formulating the shape of the Rally. Its high-toe allows players to open the head for high, soft-landing flop shots. A cambered sole is more rounded for minimal turf interaction regardless of lie. Maximizing versatility, the concave flange incorporates a medium bounce angle for all turf or sand conditions.

The wedges are available in KBS Tour Black Nickel and UST Mamiya Recoil shafts with a Lamkin UTx grip. It comes in four lofts: 54° with 13° of bounce, 56° with 13° of bounce, 58° with 10° of bounce, and 60° with 10° of bounce. Left hand is available in 56 and 60 degree models. Every Tour Edge club comes with a lifetime warranty and a 30-day play guarantee.

Engineered by scientists to produce a more natural and consistent putting stance and stroke, **BioMech's ACE** features a long shaft that is angled slightly forward to put the golfer in an anatomically optimal position. The grip then rests against the inside of the leading forearm. It simplifies the putting motion by getting the golfer to stand taller; set up in a consistent, natural and balanced athletic position; align properly to the target; and make the stroke with the larger, more accurate muscles of the body's core. The ACE can reduce back problems and pain often associated with traditional putting.

Standing taller and more open gives the golfer a better view of the target throughout the stroke. The forward angle of the shaft and innovative Optical Alignment System position the golfer's body in the same position every time and produces a "true pendulum" stroke, straight back and straight through, with the clubface remaining square to the target line. The stroke is controlled by the golfer's core; the hands, wrists, and forearms remain totally stable and quiet.

line of men's sweater vests. It combines the technological advantages of 3-D knitting, a technique that creates shaped knitted panels, cutting down on waste while also eliminating seams in the garment. The result is a better fitting vest and enhanced mobility on the course. **The Henry Vest** is constructed of soft 19.5-micron Merino wool, utilizing a 3-ply yarn for durability and resistance to pilling. The garment's comfort-enhancing features are finished off with Pointelle mesh side panels for breathability and comes in black, charcoal, KENT blue, grey and navy.

New is **Golf Pride's "find-your-perfect-grip-fit"** system on the company's website. A few easy-to-answer questions will provide golfers with the specs for the Golf Pride grip that will best fit. Also new is SNSR technology, developed by Touring pros for putter grips. The soft, proprietary compound promotes light grip pressure for superior control, and the two larger, Tour-validated shapes—pistol contour with the wide, paddle front or a rounded contemporary shape with a straight taper for consistent hand pressure.

Golf Pride has partnered with Game Golf to produce a tech-enabled system for tracking golf shot performance on the course. Golf Pride's performance grip, the Tour Velvet, will have Game Golf's GPS sensor tags seamlessly integrated into each grip, with no impact on club weight or swing comfort. A sensor will notify golfers when it's time to re-grip the club.

**Bridgestone Golf** has used knowledge gained through extensive PGA TOUR testing and over 300,000 consumer in-person ball-fittings to perfect its Tour B330 family of balls. The new **Tour B330 and Tour B330S** balls are specifically engineered to produce longer drives and better spin around the green for players with swing speeds above 105 mph, using new proprietary TOUR Core and SlipRes Cover technologies.

Featuring a TOUR Core that is 6% larger and utilizes a steeper gradient in softness from the inner core to the outer region, to generate faster ball speed and less spin off a driver face, leading to a smoother energy transfer and more power.

Bridgestone has designed the new balls to have the largest dispersion of cover performance ever between the two models, offering something for the wide range of

**KENTWOOL** is offering luxurious Merino wool comfort and performance in a new

*Product Reviews continued on page 11*





# BONNER

Chevrolet



FIND NEW ROADS™

## 2016 Chevrolet Equinox FWD LT

NO security deposit required

Tax, title, license and dealer fees extra

Mileage charge of \$.25/mile over 20,000 miles

**32** MPG  
HWY<sup>2</sup>

**MSRP \$27,345**



ULTRA-LOW MILEAGE LEASE EXAMPLE  
FOR QUALIFIED CURRENT LESSEES

**\$199** PER MONTH  
+ TAX **24 MOS**

**\$2,419 DUE AT SIGNING AFTER ALL OFFERS**

NEW CAR  
694  
WYOMING  
AVENUE  
KINGSTON  
(570) 287-2117



**#1**

IN CUSTOMER SATISFACTION!

**BONNER**  
www.bonnerchevrolet.com  
**CHEVROLET**



USED CAR  
662  
WYOMING  
AVENUE  
KINGSTON  
(570) 288-0319





6. Golf Buddy's Ladies LD2



8. CHASE 54 Explore Polo Shirt



11. Golf Skate Caddy –

9. Sun Mountain  
Cumulus Golf Rain Suit

7. Skechers GO GOLF - Drive 2 Golf Shoe

10. REKS  
Sunglasses

## Product Reviews from page 9

spin and feel preferences on Tour. The SlipRes cover produces increased friction keeping the ball more stable on the clubface, resulting in added spin on short shots. It has the opposite effect off the tee, lowering driver spin while generating longer distance while being more resistant to stains and abrasions than ever before.

**GolfBuddy's ladies LD2** combines Swarovski crystals with a genuine leather strap, stainless steel bezel and mineral crystal lens for crisp display and a luxurious look and feel. The Swarovski crystals are produced with a light sapphire hue in combination with an interchangeable alligator grain wristband. The LD2 offers distances to the front, back and center of the green, as well as distances to up to 11 hazards per hole. It features automatic course and hole recognition and comes with a distance measurement function, which tells golfers exactly how far they hit their shots.

**Skechers GO GOLF - Drive 2** fuses fashion and function into one with Goga Mat insole for high-rebound cushioning comfort. This sneaker style golf shoe is the perfect choice for golfers who demand on-course performance blended with a fashionable, street-wise look. I wear these shoes, and they are not only the most comfortable golf shoe I've ever worn, they are the most comfortable shoe of any type that I've worn! I wear them for more than just golf.

Low drop keeps your foot low to ground in a neutral position for a solid foundation. A durable rubber traction plate along with GOimpulse sole sensors provide traction control and a responsive feedback. A breathable moisture wicking lining works along with the H2GO Shield in this water resistant design. Other features include a smooth leather upper, padded collar and tongue and a soft shoe lining. Side performance accents produce a cooling effect on this lightweight 12-ounce shoe.

**CHASE54** is expanding its technology offered in 2016 with the addition of LXFUZE, a new echelon of luxury tech fabrications created by the company's scientists. In addition, the brand is introducing a soft merino-blend base layer. LXFUZE is a new, exclusive fabric, chic and unique with top-notch performance, delivering UPF +50 and excellent

comfort. **EXPLORE polo** comes in nine colors. Features include mechanical stretch fabric, DryFuze moisture-wicking, antimicrobial – quick dry and wrinkle resistance. Sizes are available up to 4XL.

**Cumulus** is Sun Mountain's most breathable **Golf Rain Suit**, offering light weight 2.5-layer technology with a two-year waterproof guarantee. It's available in men's full-zip jacket, short-sleeve pullover and pants. Cumulus has a woven shell laminated to a waterproof, breathable membrane, with a protective inner layer. A durable water repellent finish provides additional water and stain resistance. Features of the Cumulus Jacket include a pleated back which allows greater range of motion, a two-way front zipper that lies flat, adjustable hem and cuffs, zippered hand warmer pockets and a stand-up collar.

**REKS Sunglasses** combine the highest quality shatter-resistant polycarbonate lenses with stylish, unbreakable frames at affordable prices. The sunglasses are available in six frame styles with three lens options in a multitude of stylish colors including classic, Revo and mirror finishes. The frames come in a broad array of colors and finishes including matte, gloss and Soft Touch. All REKS lenses are made of lightweight impact resistant polycarbonate, which is up to 10 times more impact resistant than glass or plastic lenses. To improve lens performance, all lenses are treated with anti-scratch, hydrophobic and anti-reflective coatings that provide superior optical quality and visual comfort. Lenses provide 100% UV 400 protection from the sun's UVA, UVB and UVC rays.

**The Golf Skate Caddy** is a single player golf transportation product that combines convenience and fun so players can focus on their performance and add more enjoyment to their games. GSC is equipped with the latest technology to allow users to play music and connect to their smart phones. With room for a single golf bag, a built-in cooler and cup-holder, the product adds a new element of fun and independence for players of all ages. Other features include ball and tee storage, divot fill container, umbrella cell phone and score card holders and a quick release seat.

If you're interested in checking out these products, PGA Tour Superstores is a great place to go.





## 2016 MEMBERSHIPS AVAILABLE

Plan Your Pocono Golf Outing

### In Season Rates

**\$79.00** Weekends

**\$69.00** After 2 PM

**\$59.00** Weekdays

**\$40.00\*** Mon.-Thur.

**\*Super Seniors – 60+**

Includes greens fee, cart fee and tax.

JACKFROSTNATIONAL.COM JACKFROSTNATIONAL.COM JACKFROSTNATIONAL.COM



Ranked 17<sup>th</sup> on  
Golf Advisor

JACK FROST  
NATIONAL

EASTERN PA AND THE POCONOS MOST EXCITING GOLF COURSE!

### New 7,200 yard championship golf course at 2,000 foot elevation on the crest of Jack Frost Mountain


Jack Frost National Golf Club is unique to Northeastern Pennsylvania. Spanning more than 200 acres, the course has all the features you want in a mountain course and none of the shortfalls.

Jack Frost embraces the Pocono Mountains with all of its magnificent vistas and elevation changes.


Different than most mountain courses, Jack Frost also provides wide fairways, easily identified target areas, few uneven lies and no blind shots. Its five sets of tees on each hole gives players of every skill level an enjoyable golf experience.

**[866] 268-5503**


Call now for an exclusive opportunity to play this new championship golf course at a limited time introductory rate! Visit [jackfrostnational.com](http://jackfrostnational.com) for complete driving directions.


 **7,200 YARDS**  
From the Championship tees

 **5,100 YARDS**  
Most forward tee location

 **5 TEES / HOLE**  
For every skill level

 **LOMO FAIRWAYS**  
Unique in the Poconos

 **A-4 BENT GRASS**  
Highest quality greens

 **MEMBERSHIP**  
Available for members, resort guests and public play

\* Gift Certificates Available





Twisted Dune Country Club Hole #16



McCullough's Emerald Golf Links Hole #2

## Spring Golf at the Jersey Shore *from page 3*

doing. Tell him I said it was OK. I only wish the East Course, which hosted the 2003 U.S. Amateur Public Links Championship won by Brandt Snedeker, was still around. I'd like to see what Jaws could have done with that property. But then again, that tournament isn't around any more either. Maybe some things weren't meant to last. Oh well. Just me getting older I guess.

**Twisted Dune** is as unique as it gets, at least in these parts, sort of a Jersey Shore meets Scotland. I love it. But I love golf where a lot of it is played on the ground. It's links style, the only course designed by Archie Struthers, and features dramatic elevations, contoured fairways and shifting landscapes. Definitely not native to the region. They had to move a lot of dirt. But the result is magnificent. There's a bunch of Wow factor attached to it. The 16th and 17th are prime examples. First you have a 175-yard par 3 where you have to carry a ravine to a green protected by a series of bunkers. Then, coming back in the opposite direction, is a 370-yard par 4 with an uphill second shot over more gunk. Good stuff. And there's more of that throughout. You have blind shots, even though the landing areas and greens tend to be generous. And if the wind is up, it becomes even more treacherous. But you won't leave feeling like you've played something off the rack. This one tends to stand out. If that's your kind of thing, you couldn't ask for much more. Just go there knowing that you're probably going to lose a few balls, just because. Especially if you've never played it before. It might take some getting used to. But it definitely can grow on you. Might even make you want to book a trip to the land where this goofy game began. Before you do, make it a point to say hello to the new general manager, Rudy Virga, who's been working in this area for some time with the Empire Golf Management team.

**McCullough's Emerald Golf Links**, on Ocean Heights Avenue in Egg Harbor Township (just down the road from Twisted Dune) not too far from Ocean City, has grown on me as it's evolved. It was built on a former land fill, the dream of mayor James "Sonny" McCullough, whom I've had the distinct pleasure of playing it with. Architect Stephen Kay, who also did **Blue Heron** and nearby Harbor Pines, intended it to be a tribute to the famous European courses. And he's succeeded, which isn't always an easy thing to pull off. The wind comes into play early and often. The eighth and ninth provide a really good finish to the front side. First you have a par-4 with a dogleg right off a very elevated tee, from which you can't really see the green. And there's water on the left and stuff you don't want to be in guarding the opposite miss. Then you get a medium-length par-3 going back to the clubhouse off another elevated tee over water to a putting surface that's well protected. One time I had to

start on that hole. I wouldn't recommend it right out of the box. But you do what you do. My favorite hole might be the 15th, a 285-yard par-4 that's apparently patterned after No. 1 at Royal Dornoch, which I've never been. So I'll take Kay's word for it. The green is off to the right, so you can try to drive it if you want to take a chance either going over or around trees. Or you do what short hitters like me do and hopefully hit it down the middle, leaving a very short iron to a two-level green. It can be a fairly easy par, or maybe even a birdie, but I've seen good golfers make six there because they got greedy. Discretion is sometimes needed.

One update this year is the restaurant, which overlooks the 18th hole and is a perfect setting in the late afternoon. It used to be the Library III, part of the steakhouse chain. But the newly renovation bar and dining room has become a Pub with more of what's described as a sport-friendly atmosphere. I can't wait to give it a try, especially if I've just done something memorable at 18. Or maybe even if I somehow managed to screw it up again. You still have to eat and drink, right?

That's only a small sample of what the area has to offer. There are 17 member courses in the **Greater Atlantic City Golf Association**. Some I've played many times, others not nearly as much. You're going to have to make your own faves. And you can go to the website for more information or to book packages. **Renault**, an Ed Shearon design, is right up there for subtle playability and toughness. I've never had a bad time, and I got some insight into what he was trying to do since I was fortunate enough to play it with him. Plus you can get some wine or enjoy a great meal at their award-winning restaurant. Heck, you can even stay at the hotel if the mood strikes. **Harbor Pines** is another place that maybe falls under the radar a bit but is certainly worth the effort. It has some of the top holes down there, like the par-4 ninth, and I've always found it to be in impeccable condition. There's never anything wrong with that. And unfortunately, I can't always say that about every stop. **Ballamor**, a naturally hilly layout featuring multi-level greens that double dare you to be on the wrong section, is run by the same folks who own **Scotland Run** and now **Atlantic City Country Club**. So you know it's in stellar hands. Speaking of which, Atlantic City is one of those places that gets me excited just thinking about it. It's that good. If I had one round to play down there, that would get my highest recommendation. Simple as that. It has the whole package: layout, setting, link to the past. It just can't get much better. So if you haven't, by all means put it on your to-get-done list. I promise you won't be sorry.

Hope to see some of you along the trail. I'll be the balding midget trying to get up and down from just off the green to save a par. Don't hold it against me. You have to realize your limitations. That's the best tip I can hand out. And if your game's not happening, there's always sea shells waiting to be collected not more than a 3-wood away. Or is that boardwalk pizza waiting to be scarfed down with a side of Polish water ice?



PLAY SOUTH CAROLINA'S MOST AWARDED COURSES  
[www.TrueBlueAndCaledonia.com](http://www.TrueBlueAndCaledonia.com)

Caledonia  
 1-800-483-6800  
 A Parkland Style Course  
 Pawleys Island, SC

TRUE  
 BLUE  
 PLANTATION

"#1 Course in the Myrtle Beach Area" - *Golf Digest*

"Top 100 Public Courses in America" - *Golf Digest*

"Best 30 Courses You Can Play" - *SC Magazine*

"One of the Best Public Courses in SC" - *Golfweek*



The tradition continues at the Steve Dresser Golf Academy.  
 The golf academy holds rank in Golf Magazine's  
 Top 25 Schools in America.

Call 1-800-397-2678 or visit us online  
 at [DresserGolf.com](http://DresserGolf.com) to learn more.



"Top 100 You Can Play"  
 - *Golf Magazine*®

"America's Best Modern Courses"  
 - *Golfweek*

"One of the Top Public Courses in America"  
 - *Golf Digest*

Located in our beautiful, antebellum style clubhouse, with magnificent views of the plantation's old rice fields and the picturesque 18th green, Caledonia's Grillroom welcomes the public and is ideal for golfers, locals, visitors and business outings.

True Blue  
 1-888-483-6800  
 A Links Style Course  
 Pawleys Island, SC

BOOK A GREAT GOLF VACATION  
[www.CaledoniaGolfVacations.com](http://www.CaledoniaGolfVacations.com) • 1-866-954-8311



# Dave Pelz Scoring Game School at PGA National Resort & Spa



PGA National Resort & Spa Champion Course Hole #2



PGA National Resort & Spa Pool side

By *Tony Leodora*

PHILADELPHIA, Pa. – (May 1, 2016) – The May episode of the *Traveling Golfer* television show serves two purposes – showing its viewers how to get better at golf, and how to feel better while doing so.

Framed by the luxurious surroundings of **PGA National Resort & Spa** in **Palm Beach Gardens, Florida**, the **Dave Pelz Scoring Game School** is the perfect fix for the serious golfer who wants to improve his or her game. And we're talking about the most important part of the golf game – the scoring part.

Structured by the teachings of internationally renowned short game guru Dave Pelz, the school offers two different paths to guaranteed lower golf scores – one-day clinics and three-day scoring game schools. Both are available at the PGA National site, as well as numerous other sites around the country and in Ireland.

"I love the game, I love talking about it and I love researching it," says Pelz, who spends as much time improving the games of amateurs as he does working with the best golf professionals in the world.

"There's frustrations and thrills in both sides of the game. But, when I see an amateur who comes to one of our three-day schools, I see someone who is serious about improving their game. That's when our instructors kick into high-gear. They are just as motivated to see improvement."

The Dave Pelz Scoring Game show was shot at PGA National Resort & Spa in Palm Beach Gardens, Florida. It is home to the PGA Tour's Honda Classic each March and is one of the most sprawling, upscale resorts in America.

It boasts four courses on property – the famed Champion Course, re-designed by Jack Nicklaus and home to the PGA Tour event and its infamous Bear Trap challenge; the Fazio Course and the Squire Course, both designed by Tom Fazio; and the Palmer Course, designed by Arnold Palmer. A few miles off-property is the Estates Course, designed by Karl Litten.

In the center of it all is a huge clubhouse and hotel that has accommodated some of the most famous people in golf ... in addition to golf-entranced visitors who want the best in golf and recreational lifestyle. The spectacular pool area fills the center of



Tony Leodora Host of GolfTalk Live



the courtyard and overlooks a lake and the golf courses. The Ironwood Steak and Seafood restaurant is the showpiece of the eight restaurants on property.

"After spending a few days shooting the show I don't know which to talk about more – the great golf and excitement found on the courses, or the incredible luxury and amenities found in the clubhouse and the hotel," said *Traveling Golfer* host Tony Leodora. "To be able to learn golf from the master and his instructors at the Dave Pelz Scoring Game School in the midst of such luxurious accommodations and excellent fine dining is an incredible experience. It is a great combination of hard work ... and hard fun."

The episode from the Dave Pelz Scoring Game School at PGA National Resort & Spa begins airing May 1 and runs throughout the month on the *Traveling Golfer* network of websites ... including The Golf Director Network (see full list of sites on [travelinggolfervideo.com](http://travelinggolfervideo.com)). It also will air on Monday, May 9 as part of the Press Box television show in Myrtle Beach, 5 to 7 p.m. on HTC Ch. 4. The *Traveling Golfer* also airs as a scheduled weekly feature show on television channels throughout the Northeast and Mid-Atlantic regions.

As part of every *Traveling Golfer* show there is the additional feature, "Tech Talk", hosted by Tour Edge Golf President Dave Glod. With years of experience as a club-maker, Glod presents an inside look at the research and development of high-quality golf equipment.

Responding to golfers' never-ending demands to learn more about interesting golf courses and golf resorts across the country and around the world, well-traveled host Tony Leodora created the *Traveling Golfer* so he could take viewers on video trips to some of the most exciting golf locations. The show won first place for golf television broadcasts in the prestigious International Network of Golf Awards, presented at the PGA Merchandise Show in January.

The *Traveling Golfer* is a series of monthly shows hosted by Leodora, who has 16 years of experience in televised golf. The featured destination stays on the website for one month, before being replaced by a new show. The old shows are archived for continued viewing on home website, [www.travelinggolfervideo.com](http://www.travelinggolfervideo.com).



# WHITETAIL



## GOLF CLUB

Bath, PA • 610.837.9626  
www.whitetailgolfclub.com

Carts Equipped with GPS Systems for accurate distances and more enjoyable rounds

PGA Head Professional  
Brad Paukovits provides  
expert instruction for golfers  
of all ability levels

\$41<sup>00</sup> greens fee with cart  
after 1p.m., 7 days a week

www.whitetailgolfclub.com

**NEW RATE  
VIP CARD  
AVAILABLE**

**Bath, PA • 610-837-9626**



**Come  
Experience  
The  
Challenge....  
The beauty...**

**The Southmoore Difference!**

- 18-Hole Public Facility
- Golfer's Lounge/  
Restaurant
- Driving Range
- Advance Tee Times
- Outings/Tournaments



Head Professional  
Jim Muschlitz

**Southmoore Golf Club**

235 Moorestown Drive  
Bath, PA 18014  
(2 miles North of Bath on Rt. 512)  
**(610) 837-7200**

# STONE HEDGE

**NEW CLUBHOUSE - Fabulous Mountain Views**

**Accepting Reservations for Parties and Wedding Arrangements Now!**

*Enjoy Great Golf in  
the Endless Mountains*

Northeast Pennsylvania's most challenging  
and scenic golf course.



**MON. THRU THUR.**

**\$39** - cart and green fees  
after 1:00 • **\$29.00**

**FRI. SAT. & SUN.**

**\$49** - cart and green fees  
after 1:00 • **\$39.00**  
after 3:00 • **\$30.00**

Call for tee times  
570-836-5108

or Book ONLINE!

www.stonehedge-golf.com

Directions: 25 minutes from Scranton and  
Wilkes-Barre From Route 81, Clark Summit exit,  
18 miles west on Route 6, Tunkhannock

*27 Unique Holes...*

**ONE BREATHTAKING COURSE!**



All Carts Equipped with  
our GPS System.

Senior Day -Mon-Thurs \$29  
Ladies Day Thursday \$29  
Weekends After 1 p.m. \$37  
GPS CART INCLUDED



260 Country Club Drive, Mountaintop  
**(570) 868-GOLF**  
www.blueridgetrail.com





Rolling Green Golf Club Springfield, PA (U.S. Women's Amateur) Hole #12



Stonewall Links Old Course Hole #2

## USGA Events in PA *from page 7*

The first week of August, the Women's Amateur will come to **Rolling Green Golf Club**, a William Flynn layout in Springfield (Delaware County). This is only the second USGA event the club has hosted, the first being the 1976 Women's Open. That one went to JoAnne Carner, the 1971 champ, who beat defending champ Sandra Palmer by two in a Monday playoff. Their scores were 8-over, and in the playoff they shot 76-78, which was a combined 12 over. And the course has gotten way better since then. There are a couple of greens with serious slopes. So positioning the ball on approaches and then getting it in the hole could be, well, demanding. Then again, it's a USGA championship. It's not supposed to be a gimme.

From Sept. 10-15, the Mid-Amateur will be contested at **Stonewall Links** in Elverson. The work of Tom Doak, the **Old Course** opened in 1993. That will be used for the match-play portion of the championship. The North Course, which opened a decade later, will also be utilized in the stroke-play qualifying. This marks the club's debut in the USGA rotation.

This event was last held in Pennsylvania two years ago, at Saucon Valley in Bethlehem. That was also the first time it was held in this state. Jay Sigel won this thing three times (1983, '85 and '87). The club, which is located about an hour northwest of Philly, has hosted six local or state championships since 1996, most recently the Philly Am in 2009.

The same week, on the other side of the commonwealth, the Women's Mid-Am will be going on in Erie at the Kahkwa Club, a Donald Rose design. Nothing ever wrong with that. This is its third USGA championship, following the 1971 Women's Open and 2004 Women's Amateur. Wonder if anyone will be hardy enough to figure out a way/means to

make it to both? That ought to be worth soem kind of bonus points.

For those of you who consider northern New Jersey a part of of our extended area, the **68th Girls Junior** will be held at **Ridgewood Country Club** in Paramus from July 18-23. The USGA will use a composite layout from all three nines. The A.W. Tillinghast work last hosted a USGA championship in 1990, when Lee Trevino defeated Jack Nicklaus by two.

And of course another part of the men's grand slam, the **PGA Championship**, is heading back to **Baltusrol in Springfield**, N.J., July 28-31. The dates are earlier this year due to golf becoming a part of the Summer Olympic Games in August. This is the 17th championship for the club, going back to the 1901 Women's Amateur on the Old Course. It hosted the U.S. Open in 1903 (won by Willie Anderson), '15, '36, '54, '67 (won by Jack Nicklaus), '80 (won by Nicklaus again) and '93. Those last four were held on the Lower Course, which of course ends with back-to-back par 5s. It also hosted two Women's Opens, one of which was taken by Mickey Wright (in 1961). This is the second PGA. The first, 11 years ago, went to

Phil Mickelson, who had to come back on Monday to finish his last several holes after weather got in the way during the final round. He won by one over Thomas Bjorn and Steve Elkington, and by two over Tiger Woods and Davis Love III. Baltusrol, by the way, has the distinction of being the only two-course facility to host Men's and Women's Opens on both of its layouts.

So there you have it. Plenty of great golf awaits. Maybe even some historic golf. Hey, you never know. But it's all taking place within driving distance. Heck, for some maybe even walking distance. By all means enjoy. It could be awhile before we have a season with this many viewing opportunities again.



Baltusrol in Springfield, NJ Upper Course Hole #9



Eventually Everyone Shows Up At

# SHENANIGANS

Where Food is Fun



FOR RESERVATIONS & DIRECTIONS: 570-722-1100

Steaks • Seafood • Chicken  
Pizza • Salads • Pasta  
Great Appetizers & Sandwiches  
Dinner 7 Days a Week 4 pm-11 pm  
(Friday & Saturday til 12 midnight)

Karaoke Friday and Saturday

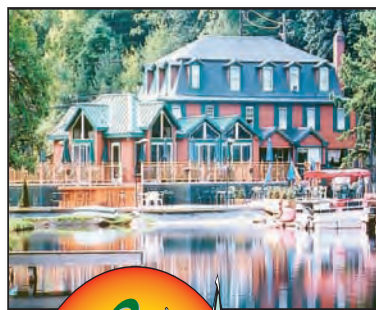
10 FLAT SCREEN TVS!

**POCONOS #1  
DANCE CLUB**

*Baby  
Boomers*

286 Lake Harmony Road  
Lake Harmony, PA 18624

**Boomers Happy Hour**  
Monday - Friday 6 - 8 pm  
All Major Credit Cards  
Accepted



*Waterfront Dining at its Best!*

COME BY CAR, SNOWMOBILE OR ON FOOT!

All New Menu Featuring:

Fresh Seafood Great Steaks  
Gourmet Pizza

*The Only Thing We Overlook is the Lake!*

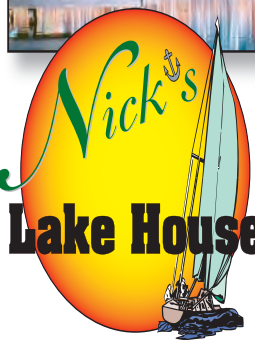
23 Flat  
Screen TVs!

• All New Gift Shop •  
Happy Hour Monday - Friday 5-7 pm

Open 7 Days a Week for Lunch & Dinner

All Major Credit Cards Accepted  
At the Water's Edge on Lake Harmony,  
between Jack Frost & Big Boulder

FOR RESERVATIONS AND DIRECTIONS CALL 570-722-2500



**Nick's  
Lake House**



Traditional New York Style Steakhouse  
**PRIME STEAKS, TERRIFIC  
SEAFOOD and GREAT APPETIZERS**

Weekend Dinner Specials & Prime Rib

Outstanding Wine List • Fireside Dining & Fantastic Service

**FINE DINING IN A CASUAL ATMOSPHERE!**

SUN.-THURS. 4 - 9:30 pm • FRI. & SAT. 4 pm - 10:30 pm • Closed Monday

All Major Credit Cards Accepted  
134 Lake Harmony Road Lake Harmony, PA

RESERVATIONS SUGGESTED 570-722-3990 CHILDREN'S MENU

[www.lakeharmonydining.com](http://www.lakeharmonydining.com)

PRESENT A ROOM KEY FOR A 10% DISCOUNT AVAILABLE AT ALL THREE RESTAURANTS • EXCLUDING ALCOHOLIC BEVERAGES

182 Lake Road, Tobyhanna, PA 18466  
Just 20 minutes from Scranton

Ask about our \$40  
Promo Play

**Memberships  
Starting at \$675**

No minimums • Full member privileges

Preferred tee times  
New practice facility  
Social and competitive events  
A "true club" atmosphere  
Lessons and clinics  
Locker facility  
Restaurant with lakeside view  
No Minimums!  
Family Amenity Options  
\*Pool/Tennis/Fitness/Events

Call our Head  
PGA Professional

**Kyle Monahan  
TODAY!**

**570-225-0112  
x111**

**Best Western Inn  
at  
Blakeslee-Pocono**



Accommodations: 84 guest rooms features Whirlpool Rooms,  
Deluxe Kings & Suites

Amenities: Indoor Pool, Sauna, Complimentary Breakfast,  
Pet Friendly and FREE Parking

Directions: I-80 East Exit 284, Left Off Exit onto Route 115, 1/4 mile on Right  
Directions: I-80 West Exit 284, Right Off Exit onto Route 115, 2/10 mile on Right



Best Western Inn Blakeslee-Pocono PO Box 413, Blakeslee, PA  
570-646-6000 • Fax 570-646-6111

For Reservations: Call 1-800-780-7234

**Golf Packages Available**  
within minutes of Top Pocono Courses

Jack Frost National • Mtn. Laurel Golf Club • Blue Ridge Trails

[www.bestwestern.com](http://www.bestwestern.com)



# Ben Marshall Spring Fourball at Fox Hill C.C.

## Hudacek and Paone Capture 2016 AGA Ben Marshall Spring Fourball.

### Ed Hennigan and Jim Hoover Captured the Senior Division.



#### Fox Hill Country Club - Wednesday, April 27, 2016

Exeter, PA - On Wednesday, April 27th, at Fox Hill Country Club, Stephen Hudacek and Nick Paone combined to card a round of 5-under par 66 to capture the AGA Ben Marshall Spring Fouball Tournament. Honesdale Golf Club's Eric Williams & Wyoming Valley's Tom Biscotti finished in second on a match-of-cards (67). Glenmaura National Golf Club's Christian Davis and Jim Gardas finished third (67) in the Open Division.

Host Fox Hill Country Club members Ed Henningan and Jim Hoover teamed up to capture the senior division title with a round of 4-under par 67. Paupack Hills Country Club's Bob Andrejko and Steve Mazur finished in second with a round of 68.

Today's event kicked off the 2016 AGA tournament schedule, the schedule continues next Thursday at Frosty Valley Country Club in the Modified Stableford. Top finishes in each AGA event will earn points for our player of the year chase for a chance to compete in the year end Challenge Cup.

#### OPEN DIVISION RESULTS

<b>Hudacek, S. / Paone, N.</b>	<b>66</b>
Biscotti, T. / Williams, E.	67
Davis, C. / Gardas, J.	67
Masters, J. / Rossi, K.	68
Brunn Jr., A. / Berry, R.	69
Moxen, P. / Evans, E.	69
Solfanelli, M. / Dougherty, M.	69
Carroll, J. / Zaleski, B.	70
Mitchell, P. / Mikiewicz, J.	70
Parise, N. / Grad, J.	70
Bolcavage, K. / Cummings, M.	71
Kacvinsky, F. / Sabato, C.	72

Nardella, D. / Nardella, L.	72
Thompson, E. / Lydick, B.	72
Bonda, R. / Peregrim, M.	73
Vasil, J. / Mancini, M.	73
Hudacek, C. / Meyer, E.	75
Manci, M. / Tarabek, B.	75
Bedford, J. / Bedford, J.	76
Domanish, M. / Hinton, T.	76
Flickinger, B. / Boland, M.	76
Tosh, M. / Tosh, T.	76
Vauter, B. / Turano, M.	76
Zavada, J. / Osborne, F.	76

#### SENIOR DIVISION RESULTS

<b>Hennigan, E. / Hoover, J.</b>	<b>67</b>
Andrejko, B. / Mazur, S.	68
Mantione, J. / Answini, M	69
Gelso, C. / Cuddy, M.	70
Stackhouse, C. / Swanson, M.	71
Tolerico, J. / Pisarcik, P.	72
Coleman, J. / Coleman, L.	73
Gauntlett, T. / Brand, C.	73
Wilbur, M. / Tyson, J.	73
Bartkowski, M. / Bartkowski, M.	74
Elias, G. / Breck, J.	74
Nestor, K. / Mikucki, W.	74
Tonkin, J. / Miller, T.	75
Answini, M. / Pianelli, A.	76
Cuneo, S. / Jeffrey, D.	76
Graham, J. / Tighe, B.	76
Piorowski, M. / Harding, D.	76
Bobola, W. / Peck, J.	78
Travis, G. / Gammaitoni, R.	78
Williams, I. / Lavenduski, J.	78



# 2016 Golf Specials

## Greens Fees & Carts

Every Day After 3 pm: \$29  
Monday thru Thursday;  
Senior Days (over 60): \$30  
Tuesday; Ladies Day: \$30  
Wednesday; Unlimited Golf: \$50  
Thursday; Foursome: \$120

## Tee-Times

Available On-line at [PoconoManor.com](http://PoconoManor.com)

or call 570-839-7111

ext. 7433/7415

## Regular Golf Rates

(Greens Fees & Cart)

Monday thru Friday: \$45

Saturday & Sunday: \$55



## 2016 Golf Memberships on Sale Now!

Golf Any Day, Any Time \$1000 includes Greens Fee & Cart

Monday thru Thursday Membership \$600 includes Greens Fee & Cart

Route 314 • Pocono Manor, PA 18349

800.233.8150 • [PoconoManor.com](http://PoconoManor.com)

Custom Golf Group Packages, Day Outings and Leagues are available by contacting  
PGA Director of Golf, Greg Wall (570) 839-7110 • or [gwall@poconomanor.com](mailto:gwall@poconomanor.com)

THE SHAWNEE INN  
AND  
GOLF RESORT

*golf*

27 Holes of Championship Golf

Approach Course and Driving Range - Lit for night play. Lessons available.

Call for tee times at 570-213-5060.

800-SHAWNEE (742-9633) | [ShawneeInn.com](http://ShawneeInn.com)

Located at The Shawnee Inn and Golf Resort, Shawnee on Delaware, Pennsylvania 18356



## 2016 Summer Golf Rates

\$65 Midweek

\$90 Weekend



Our  
Driving Range  
is now open  
until 10:00pm!





www.philadelphia.pga.com

Cleveland  
GOLF

## SCOREBOARD



www.gapgolf.org

## Philadelphia PGA Section

## Spring Meeting &amp; Pro Pro Scramble

Whitemarsh Valley C.C.

Whitemarsh Valley CC - Lafayette, PA Par 72

McCracken/Miller	63
Hillier/Pine	63
Martonick/Wallace	63
Kreider/Bostdorf	63
Rutecki/Lamp	63
Ladden/Turner	63
Cooper/Kelly	63
Kindoll/Haus	64
Paukovits/Paukovits	64
Reilly/Friedrich	64
Edwards/McAlarney	64
Pagett/Brown	65
Debski/Gipp	65
Gibbs/LeBeau	65
Flesher/Sheftic	65
Sautter/Young	65
Mattern/Dean	65
McNabb/Nye	66
Mackay/Cartwright	66
Frederick/Tasselmyer	66
Milkowski/Heller	66
Parella/Pohle	66

## Callaway Golf TPD Championship

Commonwealth National GC - Horsham, PA Par 71

## Stableford Points Results

			Total	Points
Eric Kennedy	35	33	68	24
Bill Sautter	33	36	69	22
Rick LeBeau	34	36	70	20
Eric McNamee	38	34	72	18
Michael Little	36	35	71	18
Bob Fritz	37	34	71	18
Dave McNabb	37	35	72	17
Eddie Perrino	36	36	72	16
George Forster	36	36	72	16
Carson Solien	38	34	72	16
Rich Steinmetz	34	38	72	16
Dave Pagett	38	34	72	16
Steve Swartz	37	35	72	16
Kevin Kraft	35	37	72	16
Curtis Kirkpatrick	35	37	72	16
Bertus Wessels	35	37	72	16
Rob Coyne	33	40	73	15
Rick Flesher	36	38	74	14
Ron Pine	35	39	74	14
Jeff Herb	35	38	73	14
Corey McAlarney	36	37	73	14

## Spring Meeting &amp; Pro Pro Scramble

ACE Club

Whitemarsh Valley CC - Lafayette, PA Par 72

Morano/Meisenzahl	60
Herb/Butkus	60
Matthews/Marz	60
Matricardi/Ferguson	60
Michaels/Harvey	61
McNamee/Napoletano	61
Maurer/Rushin	62
Bianco/Rudolph	62
Appleget/Steinmetz	63
Ingraham/Hatch	63
Walker/Diamond	63
Kabaso/Green	64
Forster/Perla	64
Gibson/Goudie	64
Teynor/Bonicky	64
Gibney/Swartz	65
Rinas/Burleigh	65
Zimmaro/Ketchum	65
Grossman/Hertzog	65
Kelley/Muldoon	65
Hennefer/Quinn	65
Komancheck/Miller	66

## PAO Spring Meeting &amp; 2 Man Scramble

Kennett Square G &amp; C.C. - Kennett Sq., PA Par 71

	Total
Matthias/Sanders	62
Herb/Butkus	63
Ambrose/Solien	64
Morano/Goudie	64
Green/Harvey	64
Little/Rossi	64
Hillier/Pine	64
Williams/Miller	64
Arendt/Stiles	64
Donohue/Fenstermacher	66
Frederick/Kienke	67
DiGerlando/Heffernan	67
Hill/Sikina	67
Bonanno/Mackay	67
Bruns/Romond	68
Neumann/Boutin	69
Brown/Dionisio	70
Fromholzer Jr./Mrozinski	71
Piazza/Zayac	71
Castelli/Friedrich	71
Carpineta/Kabaso	72



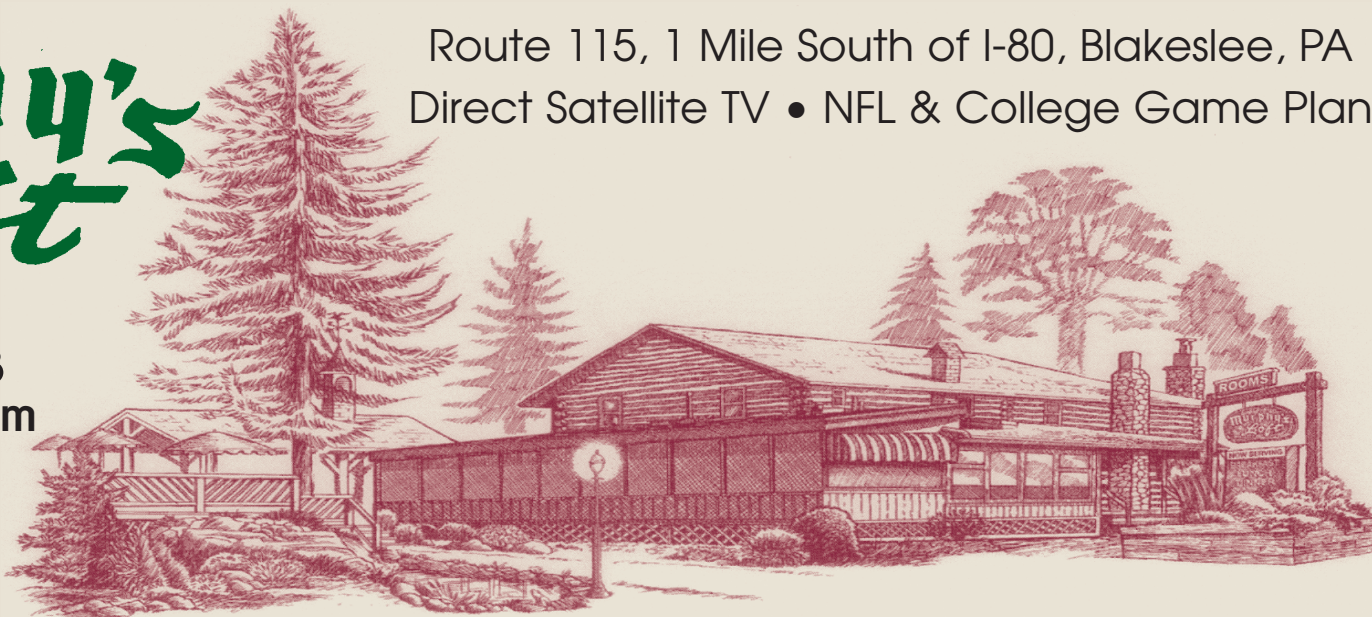
# Murphy's Loft

(570) 646-2813  
www.murphy'sloft.com

Breakfast  
Sat. & Sun.  
**DAILY LUNCH &  
DINNER SPECIALS**  
Plus Children's Menu  
FAMILY RESTAURANT



Route 115, 1 Mile South of I-80, Blakeslee, PA  
Direct Satellite TV • NFL & College Game Plan



**Thursday "A Pocono Tradition"**  
**8 oz. Strip Steak Special \$14.95**

Outside Bar, Deck and Heated Pool  
Rooms Available at our Recently Renovated Motel  
Call for Golf and Stay Packages

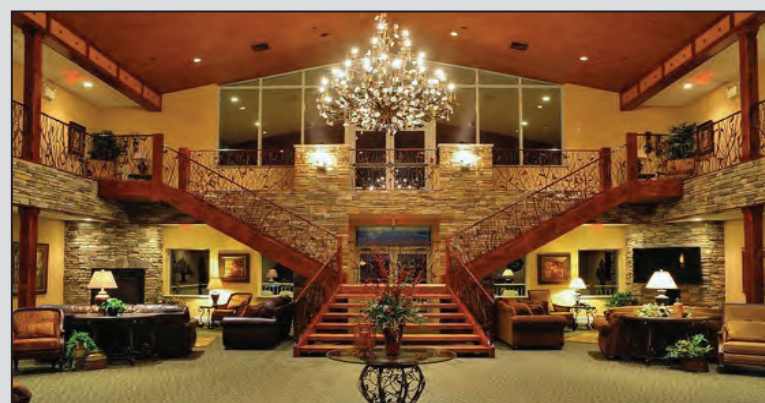


## WOODSTONE COUNTRY CLUB

3777 Dogwood Rd.  
Danielsville, PA 18038  
610.760.2777

[www.woodstonegolf.com](http://www.woodstonegolf.com)

**Stay  
&  
Play!**



Stay at the Lodge and become a Woodstone "Member for the day". The ideal place to host your next business meeting or golf outing.



# Best New Products in the World of Golf: Tony's Top Ten at PGA Merchandise Show



Nextbelt Practical Fashion with ball marker, divot tool & bottle opener



1. Antigua Heather Shirts & Wind Shirts



2. Tour Edge Exotics E-9 Driver



3. Bridgestone B330RX Golf Balls



4. High Heat Hybrids Fairway woods

by Tony Leodora

The ballots are in. The much-anticipated results are ready for distribution.

For the 13th year a thorough sweep of the annual PGA Merchandise Show in Orlando has resulted in a mountain of information about the new products on display at the massive exhibition. We have tested, analyzed and scrutinized. And, now, we have put together the list of the 10 products that caught our eye – a list known nationally and internationally as “Tony’s Top Ten.”

In addition, this year, a new award has been added – “Busiest Booth at the Show”.

This category is in recognition of an exhibitor whose products, some old and some new, attracted the most attention at the PGA Show. So much attention, that they had the busiest booth – per square foot – of any booth at the Show.

## Busiest Booth at the Show -- Nexbelt

This year, the Busiest Booth at the Show award went to Nexbelt, the company that took the golf industry by storm in 2013 with its “belt with no holes.” Nexbelt made Tony’s Top Ten at the Show in its inaugural year. This year, after introducing a few new styles (the Fast Eddie, includes a dual-purpose divot tool and bottle opener) and models (the Tactical, a rigid cord belt for use in carrying heavy objects such as tools or weapons), the company experienced another bump in interest, as well as continued success throughout the line. “It has been an amazing ride for us,” commented Eddie Rowland, one of the owners of Nexbelt. “We could hardly handle all of the visitors at our booth this year. We were slammed from start to finish.” In addition to the innovative technology and eye-catching styling of the Nexbelt, the company’s success has been fueled by the endorsement of a number of popular PGA Tour professionals – including Jim Furyk, Kevin Na, Jason Bohn and Marc Leishman. [www.nexbelt.com](http://www.nexbelt.com)

Hoping to follow in the successful footsteps of Nexbelt are this year’s hottest products (in no particular order).

## Tony’s Top Ten

### Antigua’s Heather Shirts and Wind Shirts

Antigua has long been a leader in both style and technology, when it comes to its line of golf shirts and outerwear. This year, style took the forefront.

The new line of heather shirts and wind shirts bring a softer look to the many bright colors that have dominated the golf market in recent years. Made from a blend of 95% polyester/5% spandex knit, the shirt features irregular stripes and a self fabric collar.

Antigua also garnered a lot of attention with their new performance golf shorts made from the same 95% polyester/5% spandex blend. While they retain a dress appearance, they feature the same Desert Dry moisture-wicking fabric that has become so popular in activewear for all sports.

[www.antigua.com](http://www.antigua.com)

### Tour Edge Exotics EX-9 Driver

Tour Edge Golf, based in Batavia, Illinois, has been a rising name in the golf equipment industry

for more than 20 years. Its reputation took a giant leap forward with the introduction of the Exotics line of high performance golf clubs. Insistence on excellence has been the driving force behind Dave Glod, the company’s CEO and founder. He also is the chief designer behind most Tour Edge models through the years. This year’s winner is the new EX-9 driver, featuring the highest MOI (Moment of Inertia) in golf. It is a draw-enhancing, fully adjustable driver. Its unique nature comes from a Full-Speed Impact design that maximizes club head speed through a sloped crown and a subtle sole design that optimizes weight distribution. [www.touredgogolf.com](http://www.touredgogolf.com)

### Bridgestone B330RX Golf Balls

Bridgestone is a company that has attracted a lot of attention in the golf ball market in recent years due to many technological advances. The new B330RX and B330RXS golf balls, for golfers with swing speeds under 105 mph, has all of the hot engineering of the B330 and B330S Tour golf balls but they are designed specifically for the amateur golfer.

First innovation is the new Amateur Core, which is 28 percent softer than the average tour golf ball. It utilizes a steeper gradient of softness from the inner part of the core to the outer region, resulting in faster ball speed and more reduced spin off the driver than ever before.

The second improvement is the new proprietary SlipRes cover, which is the highest performing cover Bridgestone has ever produced on a golf ball. It has the highest coefficient rating possible, producing an amazing combination of results – maximum greenside spin without losing any spin from the rough and, at the same time, reduced spin off the driver for more distance.

[www.bridgestonegolf.com](http://www.bridgestonegolf.com)

### High Heat Hybrids and Fairway Woods

In 2015 the new High Heat driver took the golf industry by storm. In fact, it won the Product Ingenuity Award for Emerging Companies, presented by the International Network of Golf. It was developed by Dean Knuth, an engineer and golf innovator who worked for many years with the USGA.

At this year’s PGA Merchandise Show, he rolled out the logical progression of last year’s success – the High Heat line of hybrids and fairway woods. Bucking the industry norm of using steel in the head of hybrids and fairway woods, Knuth used a titanium, cup-faced design that is a major improvement over the run-of-the-mill clubs.

“The big difference is forgiveness,” explained Knuth. “You can hit it anywhere on the face and still get great distance and accuracy.” The oohs and aahs coming from those hitting the new line of metal woods during Demo Day substantiated that claim.

[www.knuthgolf.com](http://www.knuthgolf.com)

### The Survivor Tee

After three years of research, the Philadelphia-based company – Greenkeepers – came up with another in their long line of innovative golf accessories. The Survivor golf tee is the latest in the

*Tony's Top 10 continued on page 31*



# Experience Tidewater's Restoration

## New MiniVerde Greens



843-253-4643 | [TidewaterGolf.com](http://TidewaterGolf.com)



# POCONO PRO GOLF SERIES

## PPGS 2016 Spring Pro-Pro Great Bear Country Club



After a cold month of April we had a cool but sunny day of golf at Great Bear Country Club. The first hole of the day for the teams of Pillar & Fritz and Kulhamer & PPGS President Mushlitz would be the Par 5, 4th. The team of Pillar and Fritz took no mercy on their playing opponents and made an eagle 3 on their first hole of the day and never took their foot off the gas pedal. They were able to finish the round with a (-10) under 61 which was just enough to win with two teams falling just short. The team of Edwards & Meyer finished 1 stroke off the pace and 1 stroke behind them was the team of Hatch & Fick.

There was a 3 way tie for 4th at (-6) 65, which was broken by a PPGS traditional throw off

## 10th Annual John Belluardo Pro-Pro Great Bear Golf Club, East Stbg., PA Par 71

### 1ST TEAM

John Pillar (Woodloch Springs CC) 61  
and Bob Fritz (Manufacturers Golf & CC)

### 2ND TEAM

Kevin Edwards (Woodstone CC) 62  
and Greg Myer (Woodstone CC)

### 3RD TEAM

Jeff Fick (Hidden Valley CC) 63  
and Terry Hatch (Hidden Valley CC)

### 4TH TEAM

Mike Molino (Scranton CC) 65  
and Zach Frisino (Scranton CC)

## Riverview Pro-Am Riverview C.C. Par 72

### LOW PRO

Dan Richie (Willow Brook)	70
Steve Fredrick (Riverview)	72
Terry Hatch (Hidden Valley)	72
Brad Paukovits (Whitetail)	74
Dustin McCormick (Glen Brook)	74
Howie VanBuskirk (Mt.Laurel)	76
Greg Meyer (Woodstone)	76

### LOW SENIOR PRO

John Kulhammer (PGA)	75
Jim Booros (PGA)	78
Joe Ambrose (Paupack Hills)	78

### LOW AMATEUR

Dylan Spadt (Southmoore)	73
Mike Guro (Southmoore)	74

### TEAM LOW GROSS

Dan Richie (Willow Brook)	65
Dustin McCormick (Glen Brook)	66
Jim Muschlitz (Southmoore)	66

### TEAM LOW NET

Brad Paukovits (Whitetail)	61
Jeff Fick (Chapel Hill)	61
Jim Booros (PGA)	61
John Kulhammer (PGA)	61



**SABONA**  
SINCE 1959

facebook.com/sabona.us  
@SabonaOfLondon

sabona.com | 1-800-497-4199 | Fax 573-471-2238



*Where Timeless Traditions  
Are Celebrated Daily*



*Excellence, Pride and Tradition.*

These are the hallmarks of Thistle Golf Club, the award-winning golf community located 20 minutes north of Myrtle Beach in the beautiful Brunswick Isles of North Carolina. Inspired by the original Thistle Club of Scotland, circa 1815, Thistle Golf Club is home to a 27-hole links-style golf course with stacked-sod bunkers, rolling fairways and majestic clubhouse with a genuine Old World atmosphere. From the imported Scottish bar to the amazing displays of historic documents and golf collectibles, Thistle Golf Club has been created with a passion and respect for the game and the people who play it.

Our uncompromising attention to detail rewards guests and residents alike. Thistle is a luxury gated community, where custom-designed homes offer unobstructed views of gorgeous greens, shimmering lakes and acres of wildflowers. Awarded 4-½ stars by Golf Digest, Thistle has also been ranked among the top 5 courses in the Carolinas.

We invite you to visit soon and share the golf experience that is uniquely Thistle.



**THISTLE**

*Excellence. Pride. Tradition.*

**910.444.2500 or 800.571.6710 | [ThistleGolf.com](http://ThistleGolf.com) | 1815 Olde Thistle Club Road, Sunset Beach, NC 28468**







**Open 7 days/week**

**GOLF SHOP**  
Call for Tee Times

**(800) 356-5827 ext. 1**  
**(910) 579-9120 ext. 1**



**PIPER'S BAR & GRILL**  
**(800) 356-5827 ext. 2**  
**(910) 579-9120 ext. 2**  
**Open 7 days/week**

Sandpiper Bay's Carolina-style Clubhouse welcomes Members and visitors alike.

Recently renovated, the Clubhouse features an inviting wrap-around porch and dramatic views of the courses. Popular with our guests, Piper's Bar & Grill serves a tasty breakfast and lunch daily. Players can wind down after a satisfying day of golf with an equally satisfying drink from our bar.

The conversion of all 27 greens to MiniVerde bermuda has elevated the quality of the course to an exceptional level.

Because of this commitment to the game Sandpiper Bay was the 2010 Myrtle Beach Area Golf Course of the Year.

[www.sandpiperbaygolf.com](http://www.sandpiperbaygolf.com)



**"BEST PLACES TO PLAY"**  
~Golf Digest

AN AWARD-WINNING RESORT,  
CHAMPIONSHIP GOLF  
& LUXURY SPA  
NESTLED IN THE  
PICTURESQUE NORTHEAST  
POCONO MOUNTAINS  
LAKE REGION

GREAT MEMBERSHIP OPPORTUNITIES.

OUTSIDE TEE TIMES  
UP TO 4 DAYS IN ADVANCE.

**570.685.8102**

[www.WOODLOCH.com](http://www.WOODLOCH.com)



# BULLE ROCK

*The Best of the Best*

**Ranked #1 in  
Maryland by  
Golf Digest  
Golf World  
Golf Magazine  
Golf Week  
Golf Styles**



**The Mid-Atlantic's #1 "Course You Can Play"  
& Only 5-Star Rated Golf Facility**

*VIP Frequent Player Packages Available | The Perfect Outing Venue*

**Bulle Rock Golf Club | [www.BulleRockGolf.com](http://www.BulleRockGolf.com) | 410.939.8887**



# Ron McPherson, Antigua President and CEO Discusses Spring 2016 Women's Performance Collection Activewear



Antigua Women's Performance-72 Radical, Polo Shirt with accent color White/Cosmos



Antigua Women's Performance-72 Fire Red Polo Shirt



Antigua Women's Performance-72 Sunburst Yellow Polo Shirt

PEORIA, AZ - The Antigua Group, Inc. - one of the nation's leading designers and marketers of lifestyle and golf apparel under the distinguished Antigua brand - announced its Spring 2016 Women's Performance Collection activewear. Antigua's women's fashions make a great gift for Mother's Day.

The Spring 2016 Women's Performance Collection is highlighted by fantastic fabrications that combine polyester and spandex, unique prints, color palettes that include beautiful jewel tones, and the continuation of successful silhouettes. This full collection emphasizes light to mid-weight overtops, plus a strong use of heathers through the assortment of polos and sheerless polos. All fabrics and silhouettes have been LPGA Tour-tested.

## OVERVIEW

"During the development of the Spring 2016 collection, I felt a desire to be more conservative with styling and therefore spent my time focusing on fabrication," says Danielle Dellios, head of women's design at Antigua. "The activewear marketplace has reached its threshold and consumers are inundated with product offerings. Every brand has its version of 'ath-leisure' clothing, so it was up to our design team to create something unique. I found myself wanting to refine the overall look of the collection by eliminating any trend-specific details and keep

styling at a minimum. By doing so, the collection evolved into something more sophisticated and classic."

## PATTERNS

Geometric patterns have been strong in the marketplace for a full year now, so styles Radical, Ascent, Modern and Champ emerged -- each featuring a version of abstract triangle prints. Radical and Champ are both white body styles with a pop of color, whereas Modern and Ascent are color body styles with tonal variations of the print. The sporty aspect of these styles lends itself to the more active customer who wants to look athletic on the course.

## COLORS

The color palette for Spring 2016 focuses on highly saturated jewel tones. "We felt the neon colors were slowly fading away and the more basic, primary colors were coming into play," says Dellios. "Color direction in the sportswear market has been stagnant, so we took our cues from high fashion and made our our version of a primary palette. For the first time in years, we decided not to run pink, but instead picked a bright clean red called Fire." Other colors include a true kelly green called Verdant, a vibrant royal blue named Hypnotic, a sunshine yellow aptly named Sunburst, and lastly a step away from the traditional purple with a more

berry color called Mardi Gras. These primary jewel tones are paired with black and white throughout the collection.

## About Antigua

Headquartered in Peoria, Arizona, The Antigua Group, through its license sports division, holds license agreements with National Football League (NFL), Major League Baseball (MLB), Minor League Baseball (MiLB), National Hockey League (NHL) and the National Basketball Association (NBA), Ultimate Fighting Championship (UFC), along with numerous American universities and colleges for men's, women's and children's apparel, headwear and luggage. Antigua additionally designs, produces and supplies product for corporate America and specialty retail managed under its corporate division. Its golf division also holds license agreements with the PGA TOUR, LPGA and the PGA of America. Antigua products can also be found online at [shop.antigua.com](http://shop.antigua.com)





**2016 MEMBERSHIP OFFERINGS****MEMBERSHIP BENEFITS:**

Unlimited Range Balls & Use of Practice Facilities  
 Complimentary Lesson Program  
 Discounted Member Guest Rates  
 Access to Brown Golf's National Reciprocal Program  
 Clubhouse & Dining included in all Membership Packages



**GENERAL MEMBERSHIP: \$700**  
 Unlimited Golf.....\$39/round  
 Guest Fees.....\$39  
**UPGRADE TO SIGNATURE MEMBERSHIP:**  
 Single.....add \$700  
 Family.....add \$1000  
**ASSOCIATE:**  
 Clubhouse Privileges and Access to Special Events  
 & Clubs for Non-Residents.....\$100/year

It is the welcoming feeling that members experience at Pinecrest Lake Golf & Country Club that makes it so special. From your first visit, there is a heart-felt sense of belonging, a warm interaction in club activities, in social events, in casual rounds and in friendly competitions. Pinecrest Lake has a committed and enthusiastic membership that creates a strong sense of community for all involved. Pinecrest Lake Golf & Country Club is the ideal setting for you and your family and friends. Call now to start enjoying your membership benefits!



Memberships Available- (570) 646-4444 • [www.PinecrestLakeGolfClub.com](http://www.PinecrestLakeGolfClub.com)  
 679 Pinecrest Drive • Pocono Pines, PA 18350 •

# PAUPACK HILLS

GOLF AND COUNTRY CLUB

**18 - Hole "Tom Fazio" Designed Course**

Regular & Corporate Memberships Available

Call for Details and Tee Times

• 570-857-0251 •

**Restaurant Open to the Public**

Casual Dining in a Country Club Atmosphere

Serving Lunch and Dinner

Special Occasion Banquet Space Available

Call for Reservations

125 Country Club Road, Greentown, PA • 570-857-0251 • [www.paupackhills.com](http://www.paupackhills.com)





5. The Survivor Tee



7. Golphin GFK golf sets

9. Cure Classic Putter



10. Golf Skate Caddy –

6. Cleveland TFI 2135 Putter



8. Leupold GX2i2 Range Finder



## Tony's Top 10 from page 23

company's line of performance golf tees, under the leadership of President and creative genius Frank Carroll.

"Our new product is a solid polymer golf tee, a one-piece golf tee, which can be installed in the ground in a traditional manner, same as any wooden tee," explained Carroll. "It has a center prong, on which the ball actually sits. Then the ball kisses off the inner angles of the three outer prongs, producing the least area of surface contact with the golf ball of any golf tee on the market."

Within the first month of play, more than 20 PGA Tour players put the Survivor into play. The best players in the world are interested in performance and the Survivor tee has been proven to have the lowest ball spin rate of any golf tee that has been tested. [www.survivorgolftee.com](http://www.survivorgolftee.com)

### Cleveland TFI 2135 Putter

There were a lot of new putters at the PGA Merchandise Show, but only one putter had a truly unique feature that could be found nowhere else. The Cleveland TFI 2135 putter was so unique that the concept had to be explained by an expert.

Adam Sheldon, brand manager for Cleveland Golf, unmasked the mystery when he said. "It's quite simple, 2135 stands for 21.35 millimeters, which is the exact radius of a golf ball."

What makes that so key is that all other putters stamp an alignment guide on the bottom flange of the putter. Cleveland has raised that alignment guide by putting it on a small shelf, 21.35 millimeters higher ... or exactly at the midpoint of the golf ball. Cleveland found that 80 percent of all golfers did not have their eye directly over the sightline, or over the golf ball. Traditional alignment guides provide a misperception. The new Cleveland TFI 2135 Putter allows for perfect alignment, and more accurate putts. [www.clevelandgolf.com](http://www.clevelandgolf.com)

### Golphin

Based in Scotland with an intent to inspire golf's next generation, Golphin designed and manufactures innovative kids' golf clubs. In particular, the company focuses on beginners, ages 3 to 12. The award-winning GFK golf sets are intended to help young kids fall in love with golf.

So many golfers from a previous generation were introduced to the game by using a cut-down set of clubs that were almost impossible to hit properly and get the ball in the air. Golphin uses aerospace technology to produce a set of clubs specifically designed to make the game easier for the young beginning golfer.

Golphin founder Calum McPherson said, "We have a passion and inspiration to get young kids into golf. Traditional equipment is very, very difficult for kids to play with. Our mission is to give kids equipment so they can have fun and stay in the sport." [www.golphin.com](http://www.golphin.com)

### Leupold GX2i2 Range Finder

When it comes to point-and-shoot range finders, there are three important factors to consider: size, accuracy and affordability. The new Leupold GX2i2 Range Finder combines the best of all three

factors into one product.

Leupold products, made in America, have been leaders in a number of industries since 1907. Golf is the newest industry for the company but they have made an immediate impact with their complete line of range finders.

The GX2i2 is the latest in their high-quality line of range finders. Rob Morrison, the company's vice president of global marketing, explains the attraction by saying, "We like to say that you get the advice of a caddy without paying a caddy fee."

To explain, the GX2i2 gives golfers the exact yardage to the flagstick (or any other mark), plus the downhill or uphill factor and how to adjust the yardage. The second feature is not legal for tournament play, but it can be turned off easily on the GX2i2, making it fun to use for play or practice ... but legal to use in tournament play after the slope calculation is turned off.

Best feature: the retail price is \$329, well below the rest of the competition. [www.leupold.com](http://www.leupold.com)

### Cure Classic Putter

Cure Putters have been dubbed "the fastest growing putter on the Champions Tour" and for good reason. Cure Putters has led the industry in delivering the highest Moment of Inertia (MOI) in putters since launching in 2014. The new Classic Series delivers stability and forgiveness of a high MOI mallet, but in a traditional blade style putter.

The initial launch of the Classic Series includes two new models: the cx1, a square-back blade; and the cx2, a round-back blade. These 100% CNC milled aluminum putters are slightly oversized (5" in length) with tungsten weight inserts in heel and toe.

Both Cure Classic Series putters were honored with selection to the Golf Digest Hot List, published in the magazine's March issue. [www.cureputters.com](http://www.cureputters.com)

### Golf Skate Caddy

One of the buzzwords whenever industry leaders talk about growing the game of golf is "fun." And there is no item that injects more fun into playing the game of golf than the new Golf Skate Caddy.

Single-rider golf carriers have exploded on the market lately ... and for good reason. There is an advantage over a sitting golf cart in that golfers keep core muscles engaged and warm throughout the round, leading to better performance. Plus, they are easy and more fun to use.

The Golf Skate Caddy proved to be the best of the bunch – in tests at golf industry conferences and at Demo Day during the PGA Merchandise Show. Well-engineered with all of the accessory features (cooler, umbrella, USB port, etc.) it also is the most stable and easiest to learn to ride.

"It's very gratifying to see the response we are getting with our product," said Patrick Pires, vice president of Golf Skate Caddy. "We have been taking the industry by storm as people see that it attracts the younger players and speeds up play."

Look to see an explosion of this product everywhere on the golf scene this year. [www.golfskatecaddy.com](http://www.golfskatecaddy.com)





Tuscany House Hotel



Renault Vineyard Golf



Since

1864



Renault Winery

LOUIS NICHOLAS RENAULT  
1822 — 1913  
FOUNDER DREAMER EXPLORER  
MASTER VINTNER  
VINEYARDS - FIRM ESTABLISHED - INCORPORATED  
1800 1864 1898  
PRESIDENT  
FEB. 21, 1898 JAN. 2, 1912



Fine Dining



# GolfTalk Live Celebrates 10th Anniversary



GolfTalk Live producer Eddie Caiazzo, one of the show's many famous guests Gary Player, and show host Tony Leodora.

*By Tony Leodora*

The award-winning GolfTalk Live radio show, a national award-winner for the last eight years, celebrated its 10th anniversary on the air in March.

GolfTalk Live debuted in March of 2006 on WNTP, Philadelphia's News-talk 990-AM, a 50,000-watt station that previously was dedicated primarily to newstalk programming. The launch was a bold step, in that the format differed from most sports radio shows which depended on call-in programming.

From its inception, GolfTalk Live was a 52-week, 100-percent interview-driven show, unique in the world of golf radio at that time. Show host Tony Leodora was dedicated to providing golfers with all the latest golf destination information, instruction, interesting golf stories and news from around professional and amateur golf, including interviews with people from all facets of the golf world.

In addition to WNTP, the show's flagship station, GolfTalk Live began syndication in 2012 with WOND 1400-AM in South Jersey, the only station that gives high-season weekend traffic reports at the Jersey Shore. In 2015 syndication continued when GolfTalk Live announced the addition of two more affiliate stations – ESPN 1230 and ESPN 1320 in Pennsylvania's Lehigh Valley. In 2016 a third ESPN station – 1160-AM – was added. The stations broadcast throughout the Lehigh Valley and into Central New Jersey and throughout the Pocono Mountains.

Also, in 2014, a significant expansion took place through internet broadcasting. GolfTalk Live joined with the fast-growing Golf Director Network, which now hosts all of the shows. Through the network, [www.thegolfdirector.com](http://www.thegolfdirector.com), GolfTalk Live now reaches across the United States and to 145 foreign countries.

"The growth of the show has been phenomenal and we owe it to the great people with whom we work, the interesting personalities we interview and the spectacular venues we visit," said Leodora, who has logged many miles in order

to broadcast the show.

"In the beginning, we thought this would be a show generated from the radio studio each week," he admitted. "We did the first show from the studio and immediately got a call from a golf course that asked if we could do the show from their location the next week. Since then we have done the show on location every week for 10 years except for one week when we were limited by a huge snowstorm and the annual Producer's Revenge show that was hosted by our producers at the WNTP studio."

Over the years, GolfTalk Live has broadcast from locations in 19 different states, plus Puerto Rico. The show also broadcasted from six foreign countries – Canada, Mexico, the Dominican Republic, St. Kitts, Jamaica and Scotland.

Regular annual highlights of GolfTalk Live include extended coverage from the PGA Merchandise Show in Orlando, the weekly summer shows from the many golf courses at the Jersey Shore and the annual package known as the Myrtle Beach Report, which includes reviews of many courses and shows at the start and the end of the world's largest golf tournament – The Myrtle Beach World Amateur Handicap Championship.

Sponsorship of GolfTalk Live has been an interesting mix of golf and non-golf companies. Presenting Sponsors Norris Sales Company and Yuengling Brewery are joined by returning sponsors Conestoga Bank, Westover GC, Myrtle Beach Golf Holiday, Kutztown Auto, LanConnect, Black Cat Cigars, Mainland GC, Bella Vista GC, Morgan Hill GC, Bulle Rock, GolfTec Philadelphia, Play-a-Round Golf, the Chris Ferry Insurance Agency, Sheraton Atlantic City, eRose Web and the Piazza Auto Group.

"It's hard to believe the network of great people and sponsors that has developed from this show," said Leodora. "And it's even harder to believe that 10 years has passed so quickly. I guess time flies when you are having fun ... and we are having more and more fun on the show, as we now begin our 11th season."

GolfTalk Live also can be heard any time following each show on its official website, [www.golftalklive.net](http://www.golftalklive.net)



# TWISTED DUNE GOLF CLUB

"New Jersey's #1 Public Golf Course" *The Jersey Golfer Magazine 2003*



TWISTED DUNE

For  
Tee Times Call:  
**609-653-8019**



- Membership Opportunities
- Instructional Academy
- Full Practice Facility
- Outings

## A True Taste of the Scottish Coast at the Jersey Shore

Twisted Dune is like no other course in Southern New Jersey. True to its name, Twisted Dune is a links-style course of twisting landscapes, dramatic elevations, and rolling fairways that offer a challenging yet supremely playable 18 holes carved on 200 acres in Egg Harbor Township. Deep ravines, towering grass covered sand hills and well over a 100 bunkers make Twisted Dune's 7200 yards among the most memorable in the region. The design features four par 5's over 500 yards, 10 par 4's and four par 3's. Though fescue and sand are generous, so are wide fairways, dentgrass landing areas and large greens. Twisted Dune offers a visually stunning golf experience that rewards accuracy and course management - making it enjoyable for golfers of every level.

It's the kind of course serious golfers love to play again and again - each time bringing a new experience.

"Third Best Daily Fee Golf Course in New Jersey" *Golfweek*



2101 Ocean Heights Ave. • Egg Harbor Twp. • [www.twisteddune.com](http://www.twisteddune.com)

# Offering a distinctly different Irish-Scottish golfing experience



Royal Portrush    Narin    Turnberry  
Royal Troon    Biarritz    St. Andrews  
Royal Dornoch    Waterville    Glen Eagles  
Southport & Ainsdale    Royal County Down  
Prestwick

7th Hole

Tee Time Reservations  
**609.926.3900 • [www.mcculloughsgolf.com](http://www.mcculloughsgolf.com)**

Egg Harbor Township, NJ...Minutes from Atlantic City and Ocean City





# WILKES-BARRE GOLF CLUB

1001 FAIRWAY DR.  
WILKES-BARRE, PA

Weekday: - Cart & Green Fee **\$32**

Weekends: - Cart & Green Fee **\$42**

Seniors Mon.-Fri. **\$25**

## TWILIGHT

WeekDay \$20 WeekEnd \$25

## Pizza Bella on the Green

570-472-0225

Check for Weekly Specials

**CALL AHEAD FOR TEE TIMES**



Custom Designed Pro Shop with Men's and Lady's Locker Rooms

Gorgeous 18 hole championship golf course nestled in the scenic Pocono Mountains

## JACK'S GRILLE

Open daily at 10:00am

Visit Our NEW Covered

Patio Bar with Cozy Fireplace

Full Service Banquet Facilities

Book your Tournament, Wedding or Private Party Today!

570-443-7424

• Proshop Ext 1 • Jack's Grille Ext 2



• [www.mountainlaurelgolfclub.com](http://www.mountainlaurelgolfclub.com)

White Haven, PA • Hickory Run State Park exit off of I-80



*Kiawah is*  
**THE ONE**

*Kiawah Island*  
GOLF RESORT  
SOUTH CAROLINA  
800.654.2924 • [kiawahgolf.com](http://kiawahgolf.com)

**SUMMER GOLF PACKAGES**  
VILLAS from \$220\*  
Call for Sanctuary pricing

*Win THE TRIP OF A LIFETIME!* Enter Today at [TheOneKiawah.com](http://TheOneKiawah.com)

5 GOLF COURSES • 3 POOL COMPLEXES • SPA • 10-MILE BEACH • TENNIS • VILLAS • THE SANCTUARY

Proud Host of the 2021 PGA Championship

\*Per person, per night, based on availability from 5/30-9/4/16. Tax & fees additional. Visit website for additional terms & restrictions.



# BUCK HILL GOLF CLUB

[www.buckhillgolfclub.com](http://www.buckhillgolfclub.com)



Call for daily rates

570-595-7730

357 Golf Drive

Buck Hill Falls, PA 18323

Buck Hill Golf Club aspires to provide a playing experience that is timeless and notably pure.

Memberships Available | 27 Holes | PGA Professionals | Full Amenities



FACEBOOK.COM/  
BUCKHILLFALLS



"TWEET" US  
@BuckHillFalls

**THE  
LONG BAY  
CLUB**  
Call for Tee Times  
877.283.2122

Long Bay Golf Club, a renowned signature design by "The Golden Bear" himself, Jack Nicklaus, provides a unique challenge to all golfers.

Opened in 1989, Long Bay has been the recipient of numerous national and local awards, including a 4.5-star rating on Golf Digest's "Places to Play" ranking and a consistent spot in the Myrtle Beach Golf Insiders' Top 25 courses list. Perhaps more important than awards, ask any local their top five places to play and most will say Long Bay.



Located just a few minutes from Myrtle Beach on Highway 9,  
Long Bay golf club • Challenge your game & create great memories.

(800) 882-3420 • [www.longbaygolfclub.com](http://www.longbaygolfclub.com)  
843-399-2222 • Long Bay Golf Club



Island Green Par 3 #13



# Mill Race to Hold Local Qualifying for Drive, Chip and Putt Championship



Mill Race Golf & Camping Resort



Mill Race Golf & Camping Resort Fairway #4

By *John Zimich*

Mill Race, PA—Hey kids, here's your chance to get to the iconic and famous Augusta National Golf Club in Augusta, Ga., home of the Masters.

If your golf game can hold up to the pressure and you pass the tests in the local and regional qualifiers, Augusta National Golf Club will be the final stop for the 2017 Drive, Chip and Putt Championship.

Mill Race Golf & Camping Resort will be hosting the local qualifying for this year's Drive, Chip and Putt Championship. It will be taking place on July 14 at the 18-hole Benton course.

Registrations can be made at the Drive, Chip and Putt Championship website or by calling Mill Race Golf & Camping Resort at 570-925-2040. The championship is sponsored by the PGA, USGA and Masters.

Competition is for boys and girls in the following age groups: 7-9, 10-11, 12-13 and 14-15. Finals are held at Augusta National Golf Club and are telecast world-wide on the Golf Channel.

"We certainly are super excited and proud to be hosting a local qualifier for the 2017 Drive, Chip and Putt Championship," said Andrew Shoop, the club's manager.

"It's going to be an exciting time for the aspiring young boys and girls to play against their peers."

In promoting junior golf, kids 15 years of age and under play for free with a playing adult after 2 p.m. daily at Mill Race.

Now in its second year of being managed by Spirit Golf Management, the 18-hole Mill Race Golf layout is in excellent condition. The 18 holes are carved out of one of Pennsylvania's most scenic areas. Whether one is just new to the game of golf or a seasoned veteran, Mill Race has wide manicured fairways and well-maintained greens for golfers of all skills. There are well-placed sand traps that come into play and a few natural water hazards.

"Our golf course is in excellent shape and we came through the winter months unscathed," noted Shoop. "Jim Hartkorn and his greens staff have done a marvelous job in the maintenance of the golf course.

"We've had golfers here on Christmas Eve and we again opened 2016 play on March 11 of this year. The numbers here have been good both on weekends and weekdays."

One can literally stay on the campgrounds and get in several rounds of golf or do a little fishing nearby.

Shoop says there are about 60 or so regulars who bring their campers to the property each and every year, stay, play and fish.

Larry Padulla, a certified PGA instructor, is available for individual lessons and clinics. He's been in the business for more than 40 years.

Mill Race has a fully stocked pro shop to cater to one's golfing needs. Club also features The Sandtrap Bar & Grille, located at 4584 Red Rock Road in Benton.

General manager Ron Stepanek, Shoop and longtime members this year have formed the Mill Race Golf Association (MRGA) and the club is affiliated with the Philadelphia Section of the PGA and Anthracite Golf Association.

The MRGA will be conducting five golf tournaments starting in May and concluding in September, said Shoop. The tournaments are open to members and non-members.

Non-members can pay a one-time fee of \$200 to participate in the five tournaments. Fee also includes greens fees, cart and prizes.

"We looking for a great year and hope the weather cooperates," said Shoop.

Fees walking 18 holes Monday thru Thursday are \$20 and \$32 with cart. They are \$22 for walking and \$34 for riding on Fridays while weekend fees from opening until noon are \$39, including cart, and \$34 from noon until 4 p.m.

There are special membership rates available and those interested are asked to call 570- 925-2040.



# BERKLEIGH GOLF CLUB

*Open To The Public*  
*Golfweek Magazine 2015*  
Rated #8 Best Places To Play in PA

- Past Site of the  
LPGA Betsy King Classic
- Weddings,
- Meetings,
- Outings

Check Out Our  
Website for  
Daily Specials!

[www.berkleighgolfclub.com](http://www.berkleighgolfclub.com)

14623 Kutztown Road • Kutztown, PA 19530

Call 610-683-8268



## BRIAN BOYLE SCHOOL OF GOLF

### SKYTOP LODGE

**New for 2016**

1-DAY GOLF SCHOOL \$95 p.p. 3 Hrs  
9am-12pm

2-DAY GOLF SCHOOL \$225 p.p. 3 Hrs  
2 Day Golf School 9am-12pm

• Includes Instruction, Video Analysis, Instruction Manuals  
Range balls, Refreshments • Complimentary Golf after class  
Classes Are Limited



Junior Golf Schools Available

1 Day - 2 Day Schools \$75 per day  
9am-11pm



PRIVATE PERSONALIZED INSTRUCTION  
One on One 30 minutes sessions, by appointment

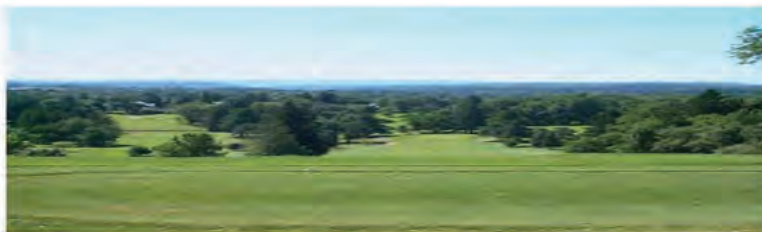
1 person \$55 - 2 people \$70 - 3 people \$85 - 4 people \$100

CALL (570) 595-8910 TO ENROLL [www.skytop.com](http://www.skytop.com)

*Irem Country Club*  
*2016 Golf Season Pass*



Limited memberships available on first come basis!!!



The Irem Golf Association is offering Golf Membership  
to non Shriners for this years golf season

The membership includes golf, range privileges,  
golf bag storage and golf privileges at local area  
reciprocal golf courses.

For inquiries please call the  
Irem Country Club Business office at  
570-675-4465 Ext 241

## GREG WALL GOLF SCHOOL

at The Inn at Pocono Manor

Choose from  
**4 DIFFERENT SCHOOLS!**

**Two Day.....\$275**

**One Day.....\$150**

**Short Game.....\$150**

**ALL NEW**

**Create Your Own School**

Over 33 School Dates Scheduled  
ALL SCHOOLS from 9am-4pm  
Include Video, Lunch, Workbook &  
Free Golf After Class!

Our  
34<sup>th</sup>  
Year

570-839-7110

[gregwallgolfschool.com](http://gregwallgolfschool.com)







**GREAT BEAR**  
GOLF CLUB

*A Jack Nicklaus Signature Course*

Visit our semi-private golf club, with something for everyone!



- Enjoy casual fare at Jack's Pub and stately dining in the Legacy Dining Room.
- The perfect setting to host your wedding, next special event or golf outing.
- New Member Preferred Pricing at 35% off first year of membership, 15% second year of membership, waived initiation fee and a wide array of benefits at Great Bear Golf Club and at Shawnee Inn and Golf Resort!

Call 570-223-2000 for more information!



Ottinger  
GOLF GROUP

# WHERE WILL YOU PLAY?

ottingergolf.com



SCOTLAND RUN GOLF CLUB | ATLANTIC CITY COUNTRY CLUB | BALLAMOR GOLF CLUB



856-863-3737  
2626 Fries Mill Road, Williamstown, NJ 08094  
scotlandrun.com



609-236-4400  
One Leo Fraser Drive, Northfield, NJ 08225  
accountryclub.com



609-601-6220  
6071 English Creek Ave., Egg Harbor Township, NJ 08234  
ballamor.com